

XIXUN E10 Android LED Card

E10 card picture



As outdoor digital media markets growing up rapidly so more and more led ads and media companies are urgently need a set of led system solution. Under those conditions,

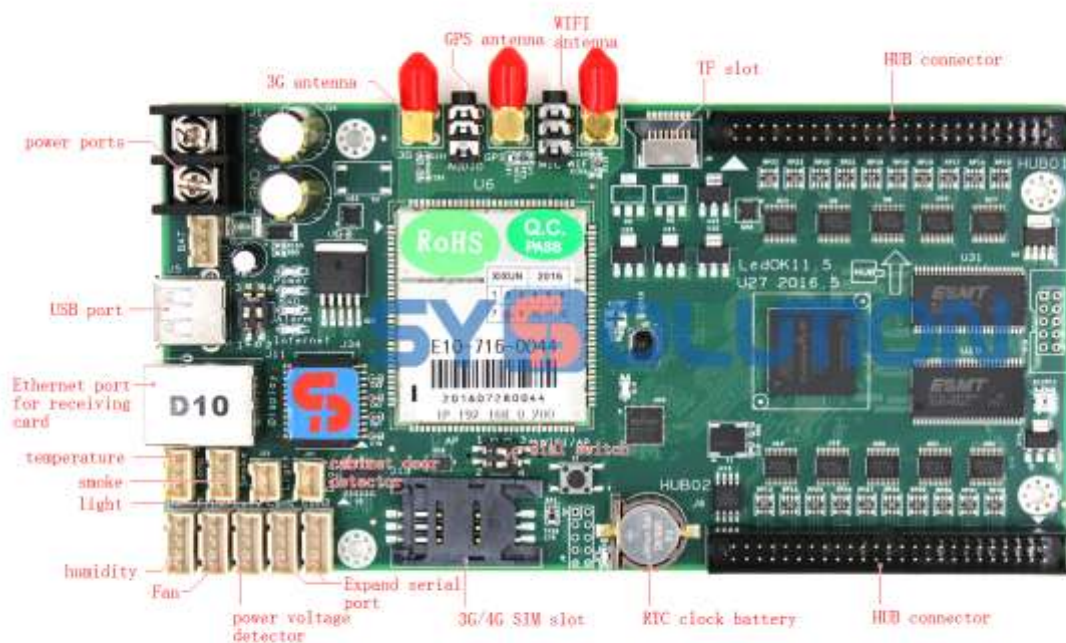
E10---andorid led control card with 3G/WIFI integrates comes out, moreover, its GPS tracking function will describe the vehicles trace, which help the led ads to put their ads much more precise. Besides, E10 also obtains the AP function, it can be as AP for other devices including ipad, iphone or android phone to accessing, which will increase more and more people to take part in led screen ads at any time and any places.

A powerful hardware matches a power software, stable and functionable AIPS platform perfectly meets all requests including group control, video monitor, status check, statistics and so on.

Traits:

1. Integrates WIFI/3G/GPS modems,
2. Onboard power, humidity/temperature sensor, cabinet door/fan/smoke sensors,
3. Customized for LED ads sign and taxi top sign,
4. No need install any software, all use web-based platform.

E10



Technical parameters:

Type	Intelligent led controller
Mode	E10
Pixels	After cascade:540*960 (Full Color) ; Without cascade:320*256
3G	Support
WIFI	Support
GPS	Support
AP	Support and allow other devices to access
Led display type	Full color
Flash onboard	4GB EMMC and 4G storage , expand to 32G by TF
Gray level	65536

Led module scan types	Support random scan types within 32 scans
Audio	Support
microphone	Support
Camera	Support
Readback display content	Support
Display in schedule	Support
Video formats	support video format 3GP and MP4, please choose Divx, Xvid, AVC/H.264 encoding for MP4,
Animation formats	Support GIF,SWF etc.
Image formats	Support bmp,jpg,gif,wmf,ico etc.
Text formats	Support txt , rtf
Text mode	Single line, static and multi-line etc.
Clock	Types of analog clocks and digital clock
Timing	Timing and countdown
Software	WEB(www.m2mled.net)---AIPS platform
Working temperature	-30°C ~ +70°C
Stock temperature	-40°C ~ +90°C

Other functions:

1. Andorid OS 4.4,

2. Using AIPS cloud platform to realize publish programs, check status, power switch and get display log remotely,
3. Support synchronizing led programs for multiple led screens,
4. Support various media types including video, image, text, weather, clock, countdown, realtime message and html code,
5. Support timely notes and program task in schedule,
6. Support led module driver IC bands including MBI, SUM, ICN and MY,
7. Support cascading, sending and receiving cards keep the exactly same effects,
8. Support full color static and 32scan types, support half, one_third and quarter ways to install led screens freely,
9. Match with powerful customized development kit with openable protocols,
10. Support working normally within 6 seconds with super capacitor to protect electric circuit.

Parameters configuration

1. 3G frequency: support four frequencies GSM/GPRS/EDGE, working frequencies: GSM 850, EGSM900, DCS1800 and PCS1900.

3G dual frequencies UTMS/HSPA+, working frequencies: WCDMA BAND 1/8 (900MHz/2100Mhz), multimode EDGE/GSM/rel.8 HSPA+modem.

2. GPRS/EDGE HSPA+ data features

HSPA data downlink transmission maximum 21Mbps

HSPA data uplink transmission maximum 5.76M bps, EDGE data transmission maximum 236.8kbps, GPRS data transmission maximum 85.6kbps,

3. Wi-Fi/WAPI

Support SoftAP function, support 802.11b/g/n

Encryption: WFA, WPA/WPA2 Qos: WFA WMM, WMM PS radio frequency performance: 11b power rate 15dBm, EVM \leq 35%; 11g power rate 13dBm, EVM \leq 25dB; 11n power rate 13dBm, EVM \leq 28dB;

4. GPS/AGPS

GPS working frequency: 1575.42MHZ GPS carrier-to-noise ratio (CNO for short): 41db/Hz; GPS dB: acquisition dB-148 dBm(cold), -156dBm (hot), tracking sensitivity:-162dBm, GPS start up time: hot start<5s, warm start<15s, cold start<50s.

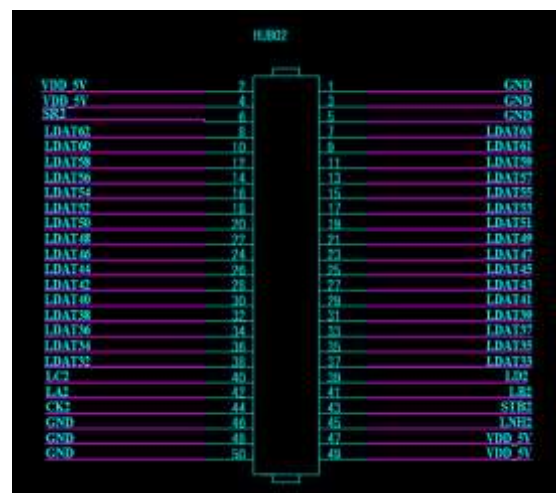
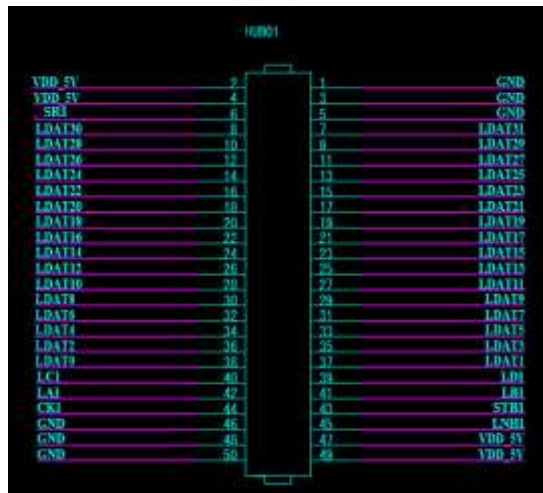
5. MP4 video format MPEG-4/ H.263, H.264, support storage TF card: Mircro-SD maximum 32GB, support hot swap, MP3 audio format AMR/MIDI/WAV/MP3/AAC/AAC+;

Working conditions:

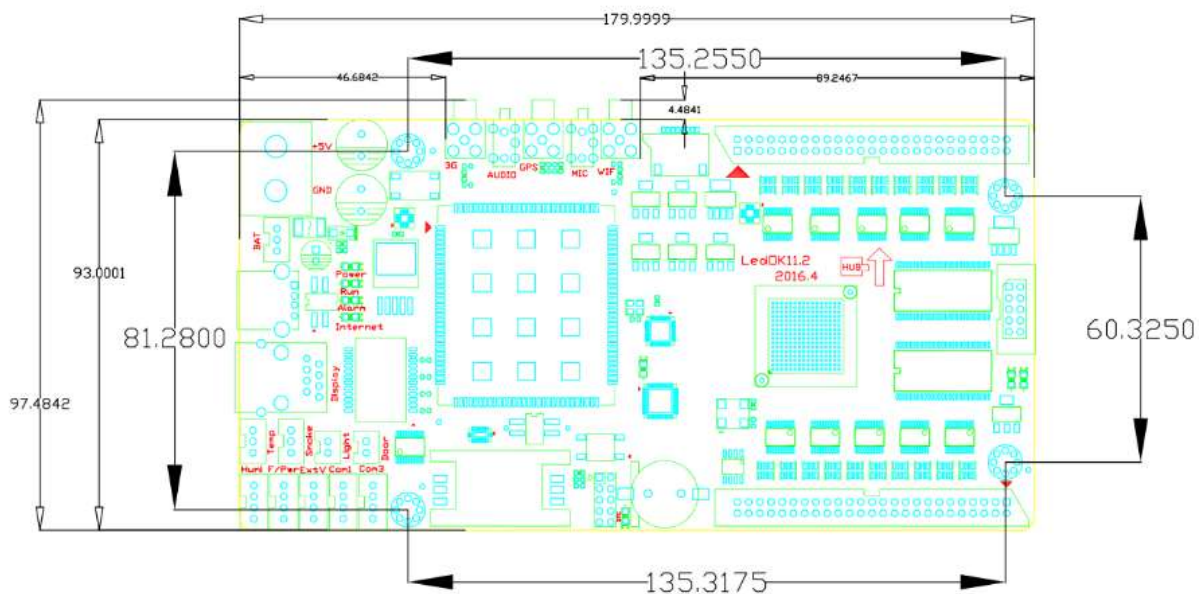
	Minmum	Maximum
Working temperature	-30°C	+70°C
Stock temperature	-40°C	+90°C

Rated Voltage 5.0V	4.5V	5.5V
Rated current 0.9A	-	3A
Rated power 7.5	-	

Output interfaces definition



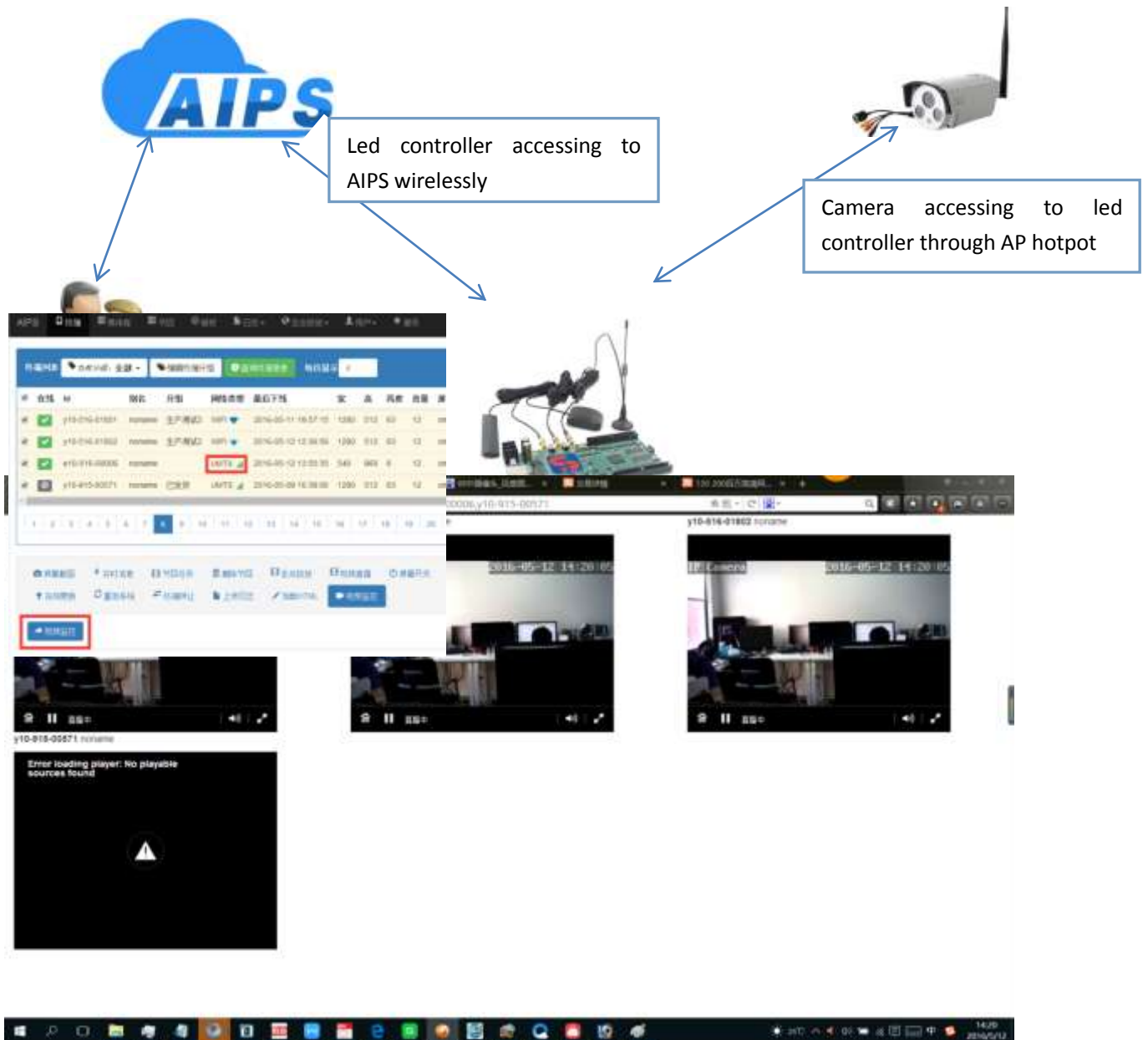
Dimension



Maximum height is 20mm.

Solution of wireless camera monitor remotely:

1. Choose any type of wifi camera with rtmp function,
2. Choose live streaming media service provided by Baidu cloud, Alicloud, LeCloud or HiKvision, or can build own live streaming media server.
3. Only need to set the rtmp address in AIPS platform then can display the live streaming smoothly,



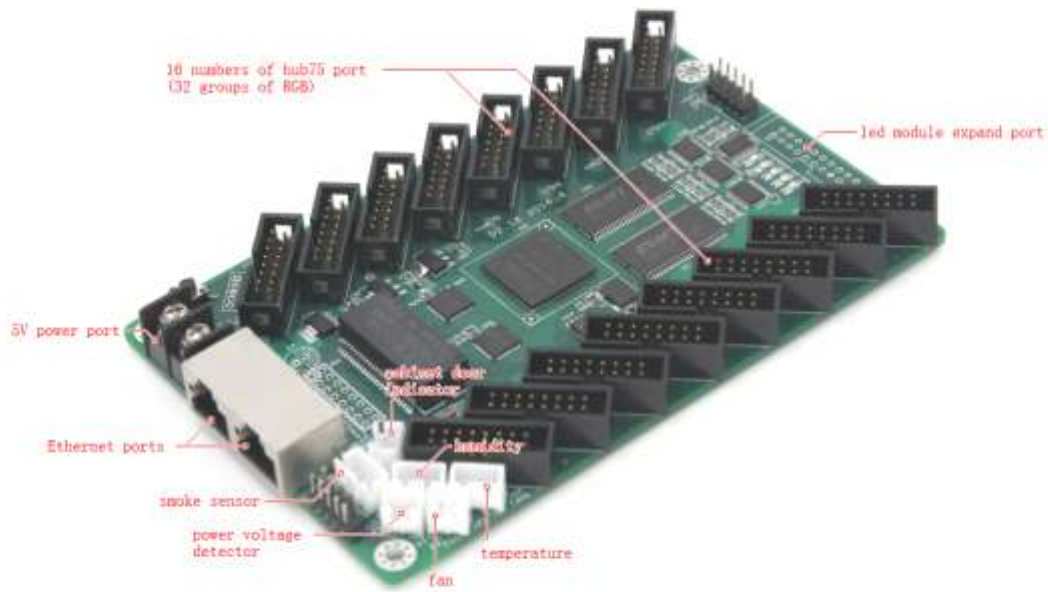
Matches with receiving card D10-75

Picture of D10-75



D10-75

Receiving System Controller



Traits:

1. Sending and receiving card connect through Ethernet cable, have exactly same display effect,
2. Support more resolutions and will save a lot of cost for led large screen,

Standard 32x32 led module with 1/16 scan type, one pcs of D10-75 can support 320w x 512h pixels,

High refresh rate and high bright effect then one pcs of D10-75 can support 160w x 512h or 320w x 256h pixels,

E10 card can support 8 numbers of HUB75 (16 groups of RGB),

standard taxi top sign double sides can only need one pcs of E10, that is enough.

Standard LED ads sign normally needs one pcs of E10 and one pcs of D10-75, that is enough.

For small pixels led ads sign normally needs one pcs of E10 and 2 pcs of D10-75 will be enough.

E10 and D10-75 cards obtain cabinet door sensor and other sensors, so No need to plug any other sensors, save more cost and easy for installation.