

Linsn EX901 Multifunction Card

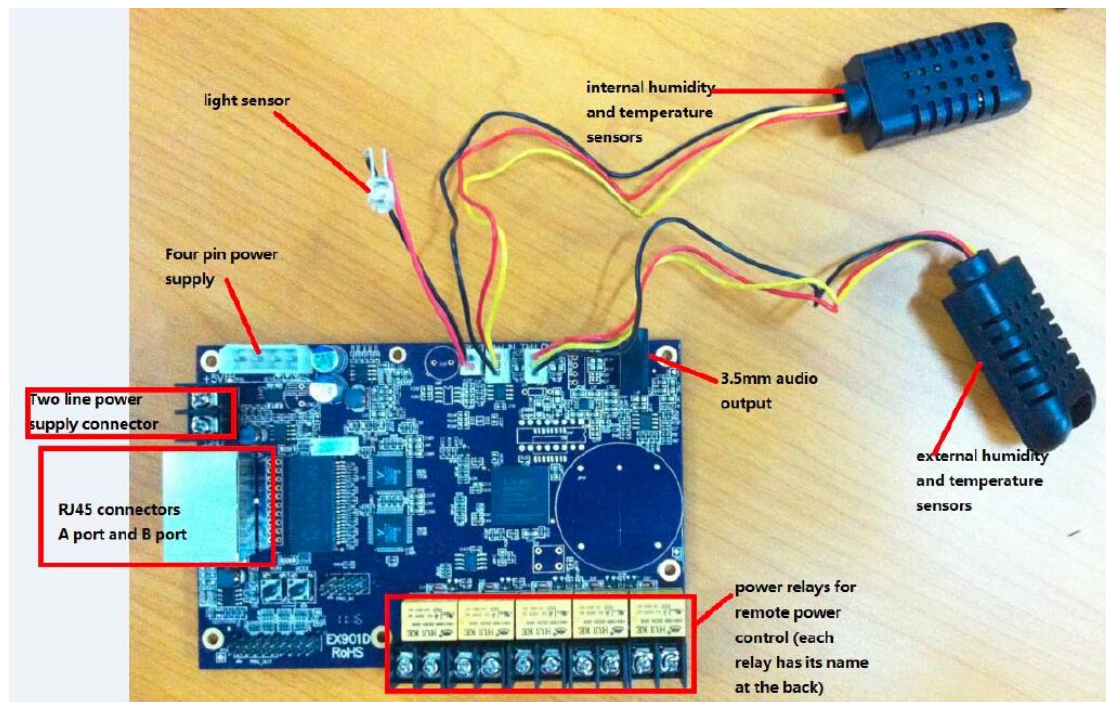
2016 Dec

1. Function



- 1) One audio output;
- 2) Two temperature/humidity detection modules to detect the temperature/humidity inside and outside the cabinets;
- 3) One light sensor to realize adjusting brightness automatically;
- 4) 5 Relay to turn on/off the power supply;
- 5) Timing function, can be used as a timer or delayer;

2. Interface instruction



3.Usage

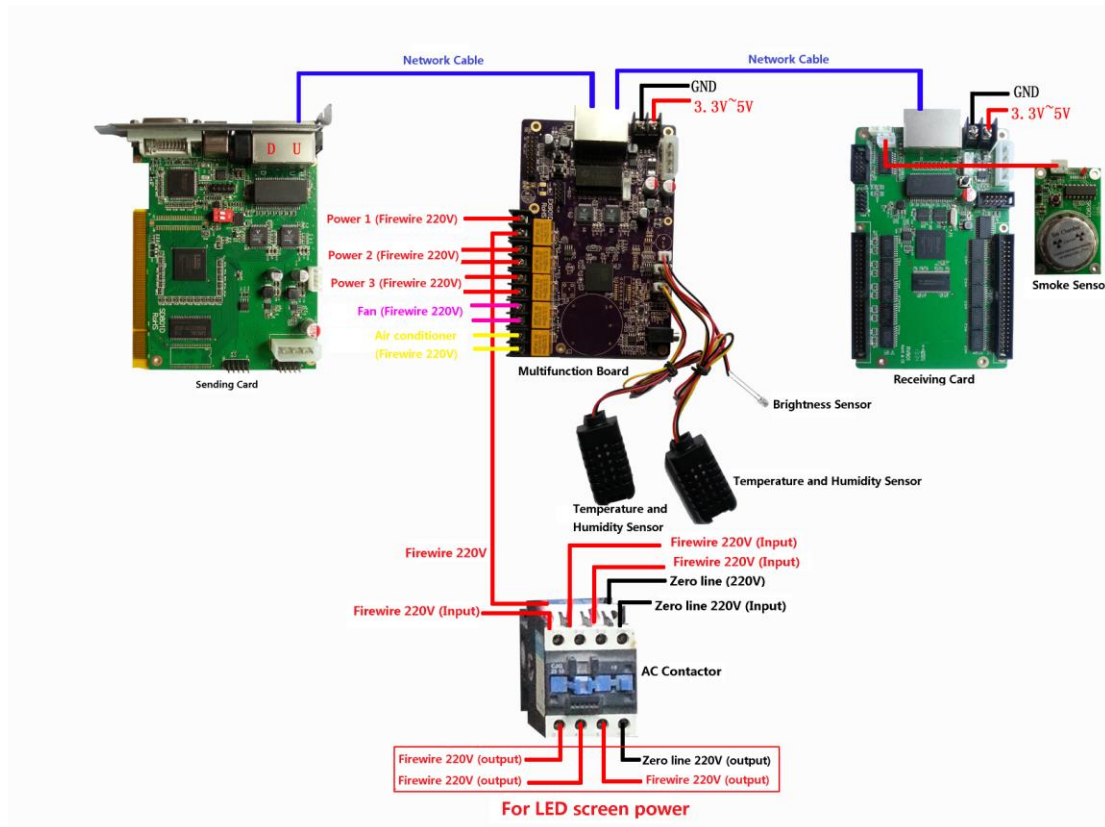
1) Connection

Place between sending card and the first receiving card, usually near the led screen side.

2) Control power supply of screen remotely

Power1, Power2, Power3 on/off-control by sending card

FAN1, FAN2 on/off-control for Fan and Air Conditioner.

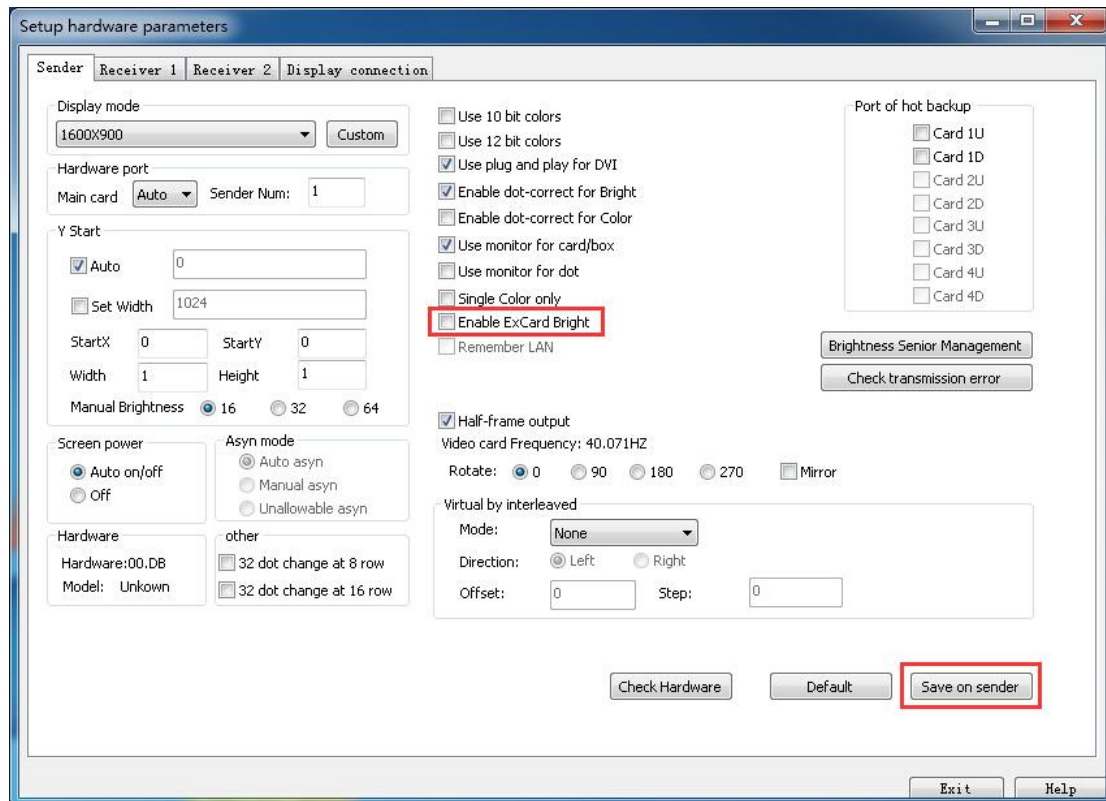


3) Temperature/humidity inside or outside the cabinets

Place the Temperature/humidity sensor in proper place (extend the cable accordingly), LedStudio will fetch the data value from the sensor and can be shown on LED Screen

4) Brightness adjustment automatically

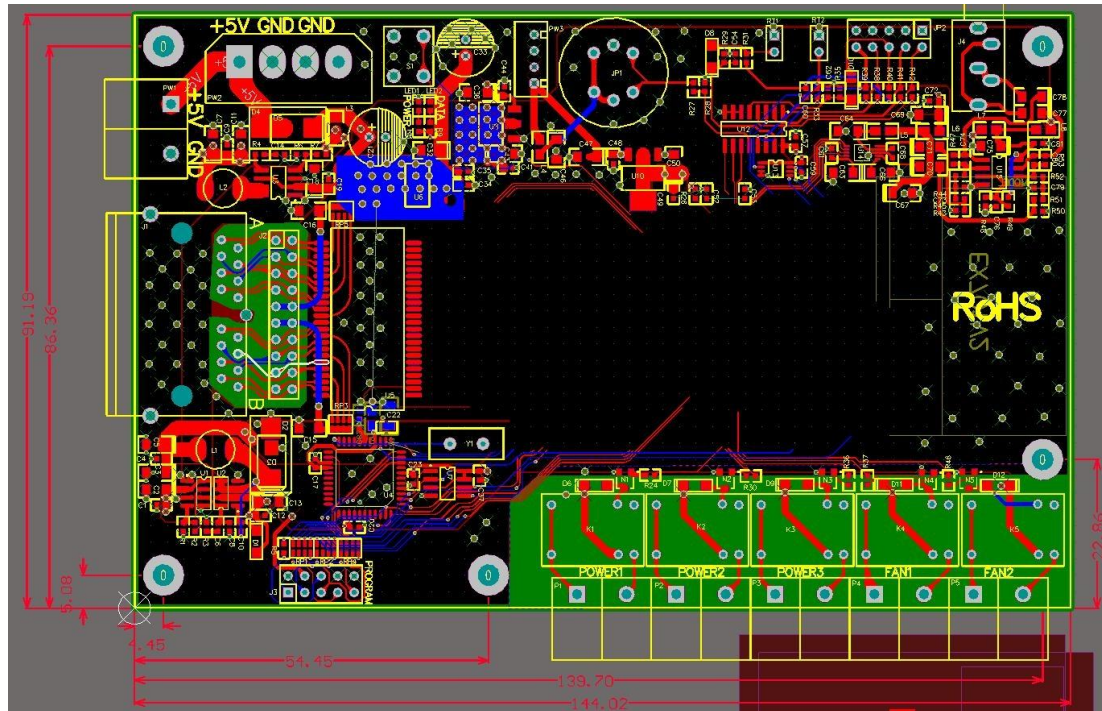
Place the Temperature/humidity sensor in proper place (extend the cable accordingly); enable Auto brightness adjustment for Function board in LedStudio to realize the auto brightness adjustment function,



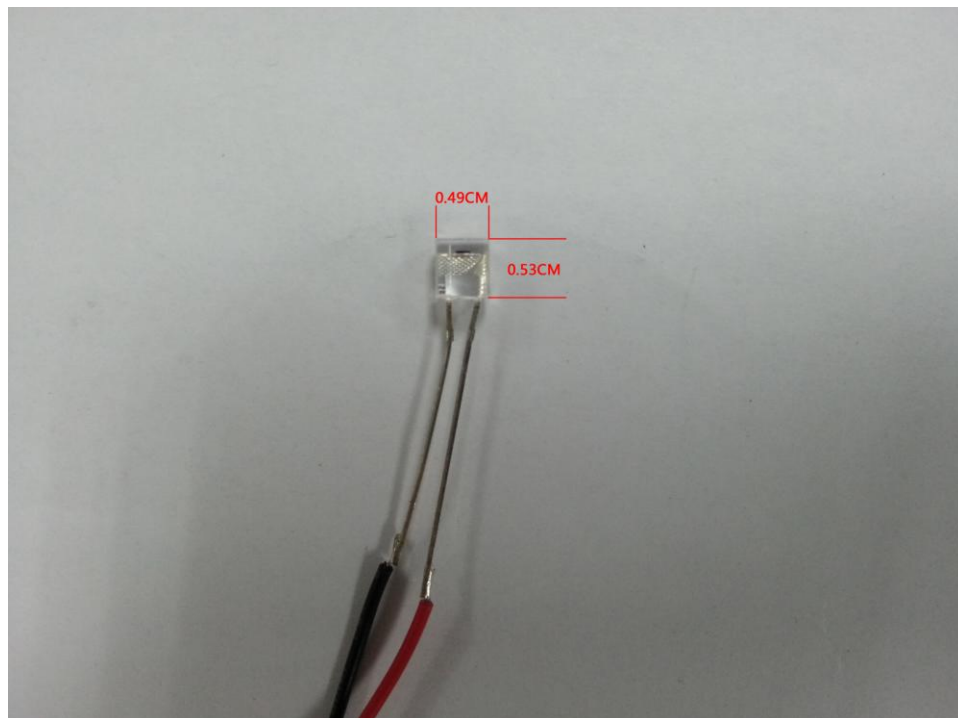
5) Audio transmission

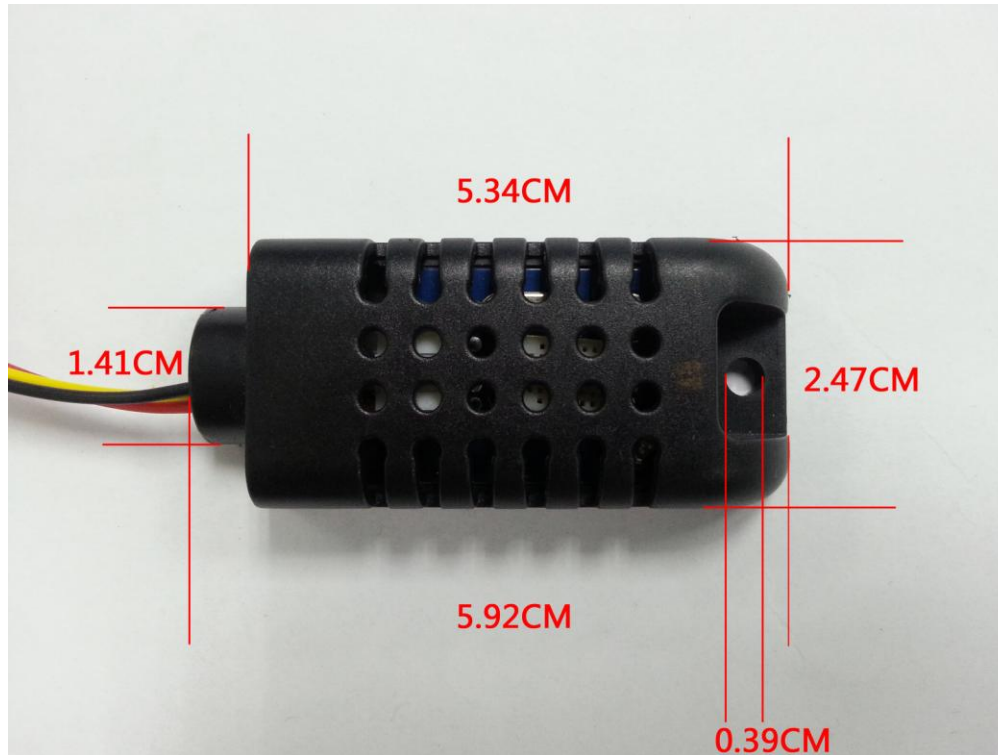
Input Audio data to Sending card 3.5mm audio jack; the audio data will be transmitted to function board by RJ45 cable, and then separate the Audio data and output from 3.5mm audio jack in Function board

4.PCB schematic



5.Size of accessory

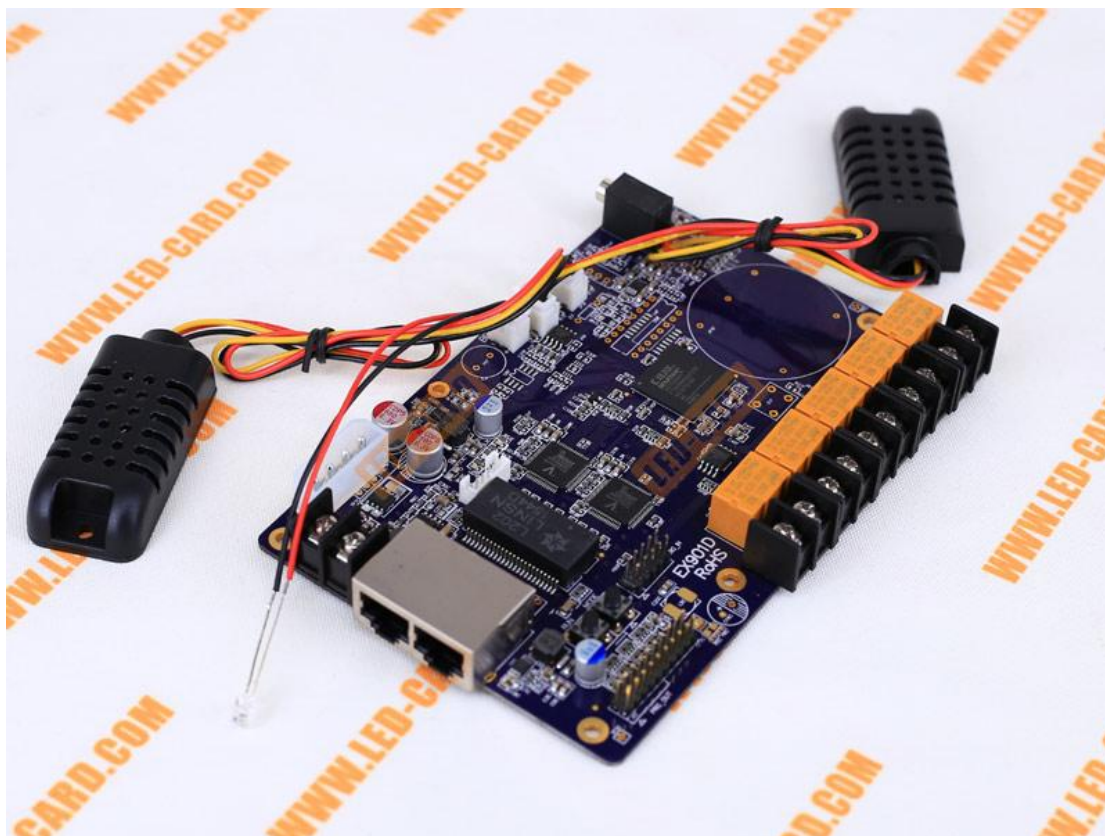




6.Specifications

Rated Voltage (V)	5	Maximu	5.5	Minimu	4.5
-------------------	---	--------	-----	--------	-----

		m value		m value	
Rated Current (A)	0.40	Maximum value	0.45	Minimum value	0.35
Rated power consumption (W)	2.0	Maximum value	2.5	Minimum value	1.6
Environment Temperature (°C)	-20°C ~ 70°C				
Environment Humidity (%)	0% ~ 95%				





You can Get the [Linsn EX901 multifunction card](#) here