

# Linsn EX902 Multifunction Card

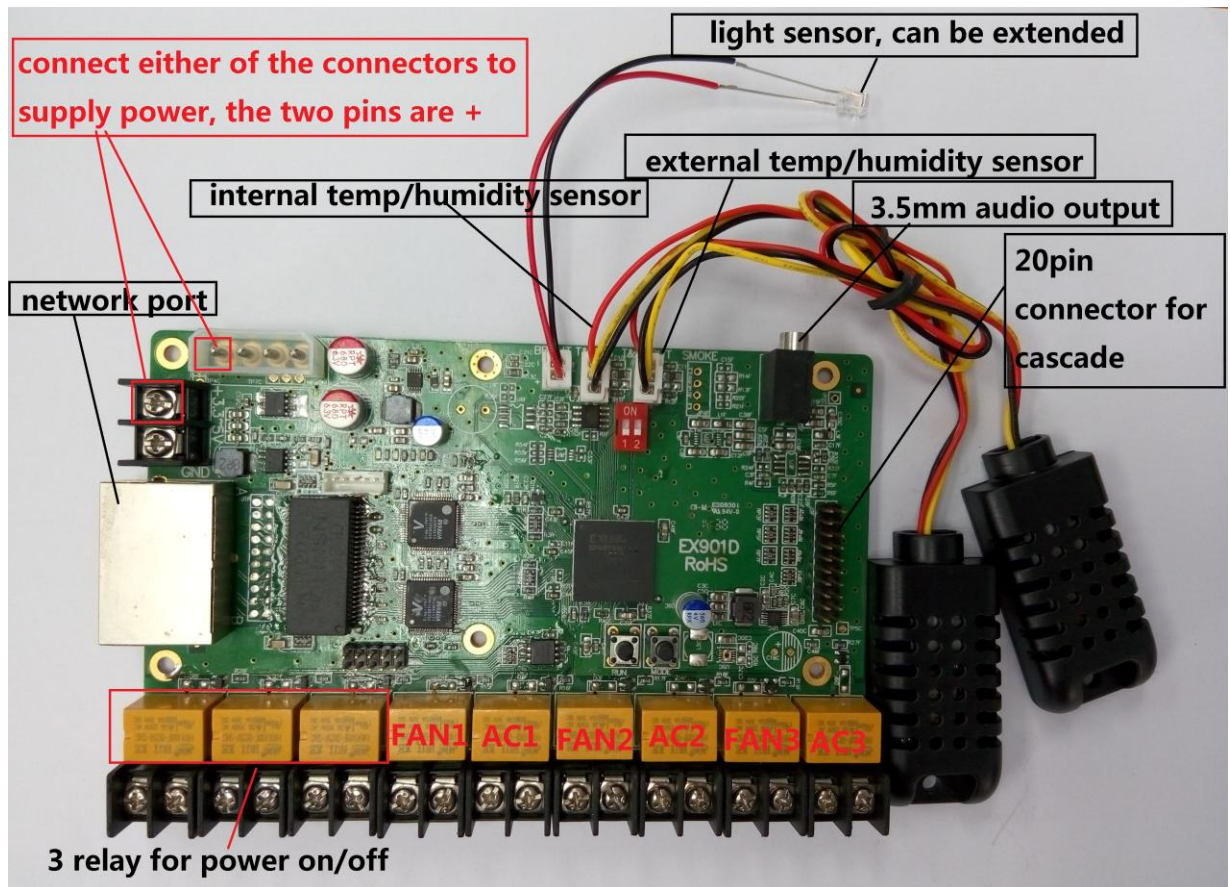
2016 Dec

## 1. Function



- 1) One audio output;
- 2) Two temperature/humidity detection modules to detect the temperature/humidity inside and outside the cabinets;
- 3) One light sensor to realize adjusting brightness automatically;
- 4) 3 relay for powering on/off, 3 relay for opening/closing fans, and 3 relays for opening/closing ACs;
- 5) Timing function, can be used as a timer or delayer;
- 6) Supports cascade function;

## 2. Interface instruction



## 3. Usage

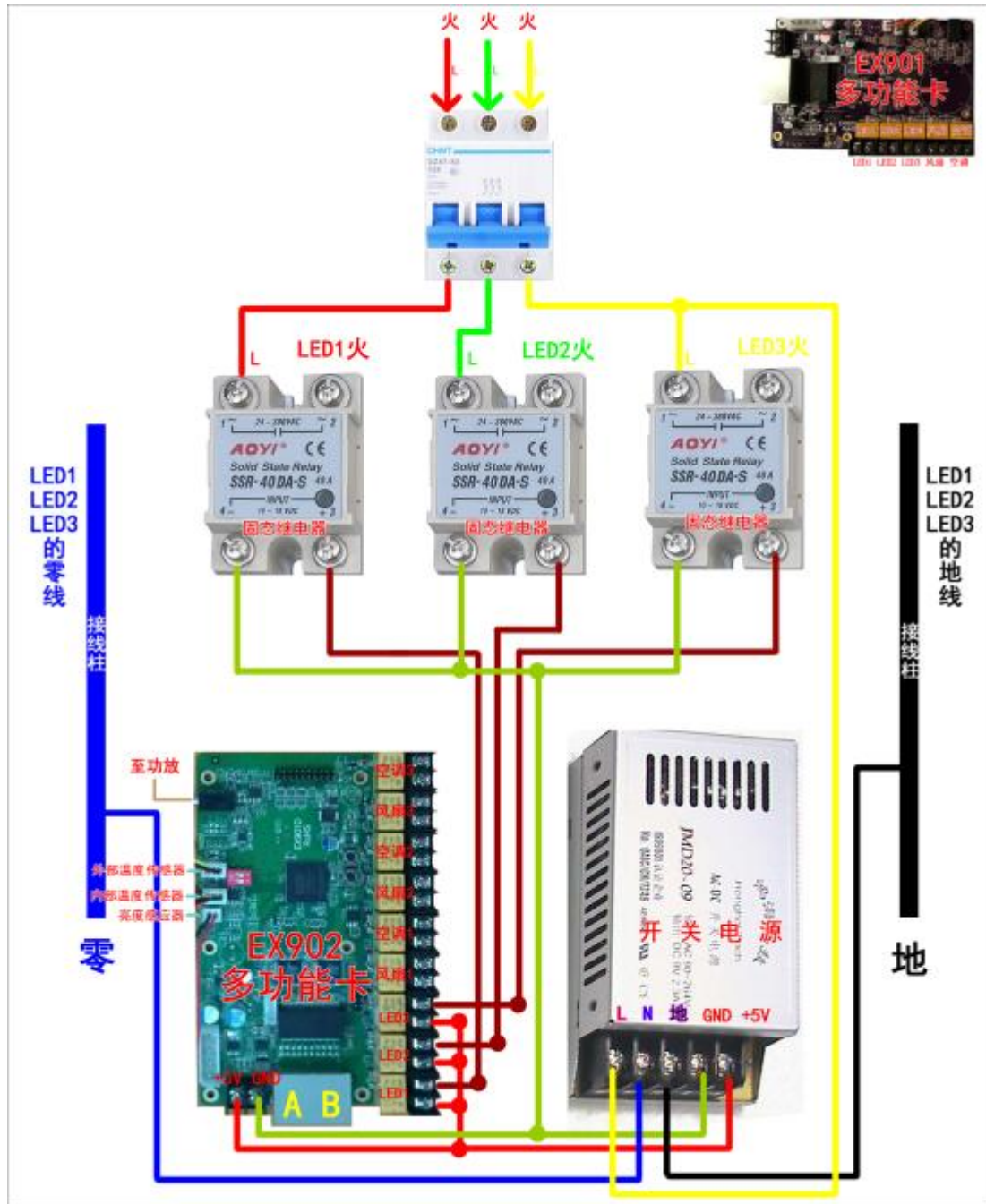
### 1) Connection

Place between sending card and the first receiving card, usually near the led screen side.

### 2) Control power supply of screen remotely

Power1, Power2, Power3 on/off control by sending card

FAN, AC on/off control

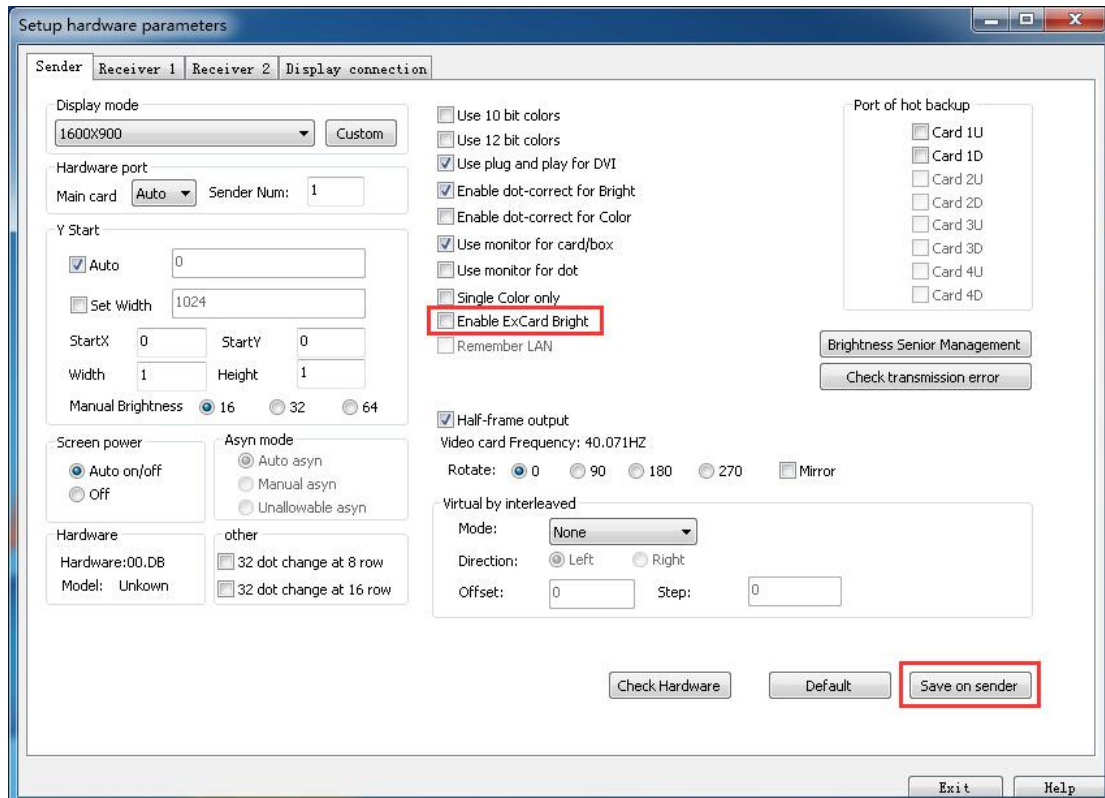


### 3) Temperature/humidity inside or outside the cabinets

Place the Temperature/humidity sensor in proper place (extend the cable accordingly), LedStudio will fetch the data value from the sensor and can be shown on LED Screen

### 4) Brightness adjustment automatically

Place the Temperature/humidity sensor in proper place (extend the cable accordingly); enable Auto brightness adjustment for Function board in LedStudio to realize the auto brightness adjustment function,

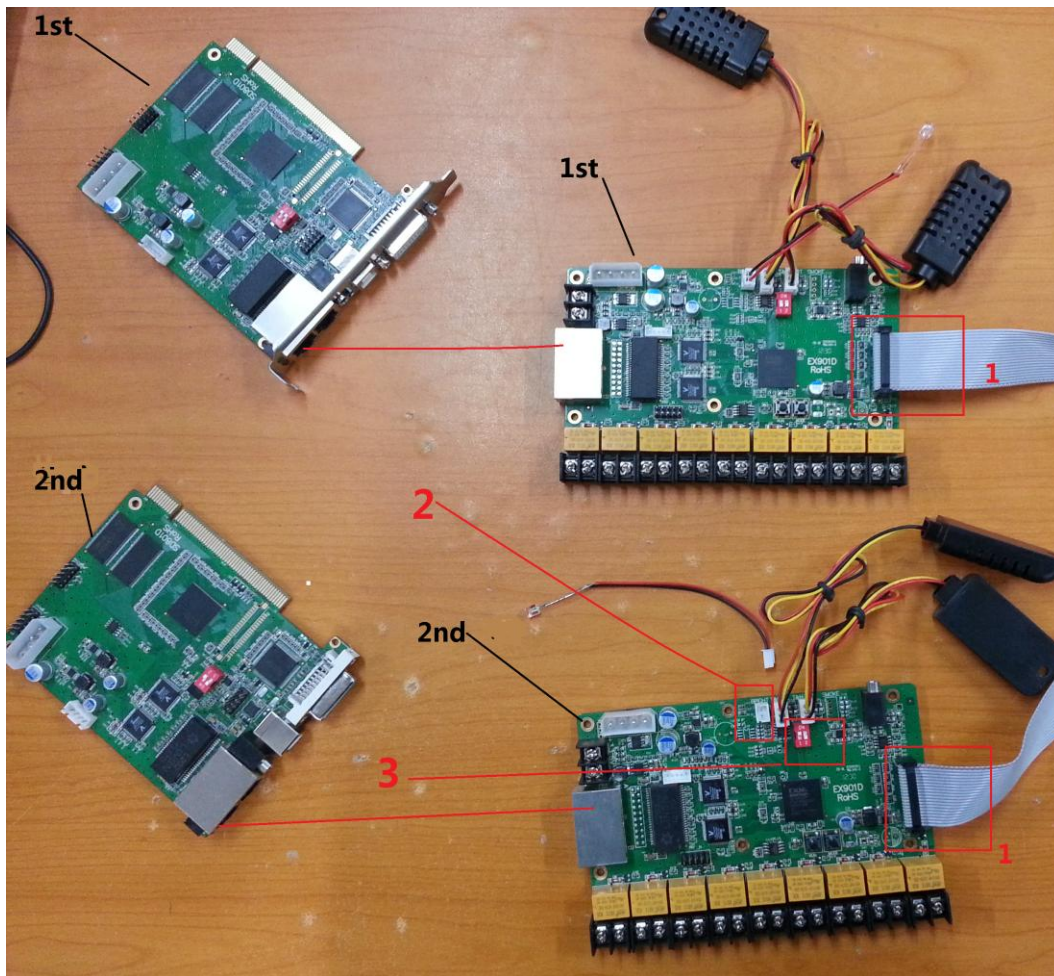


## 5) Audio transmission

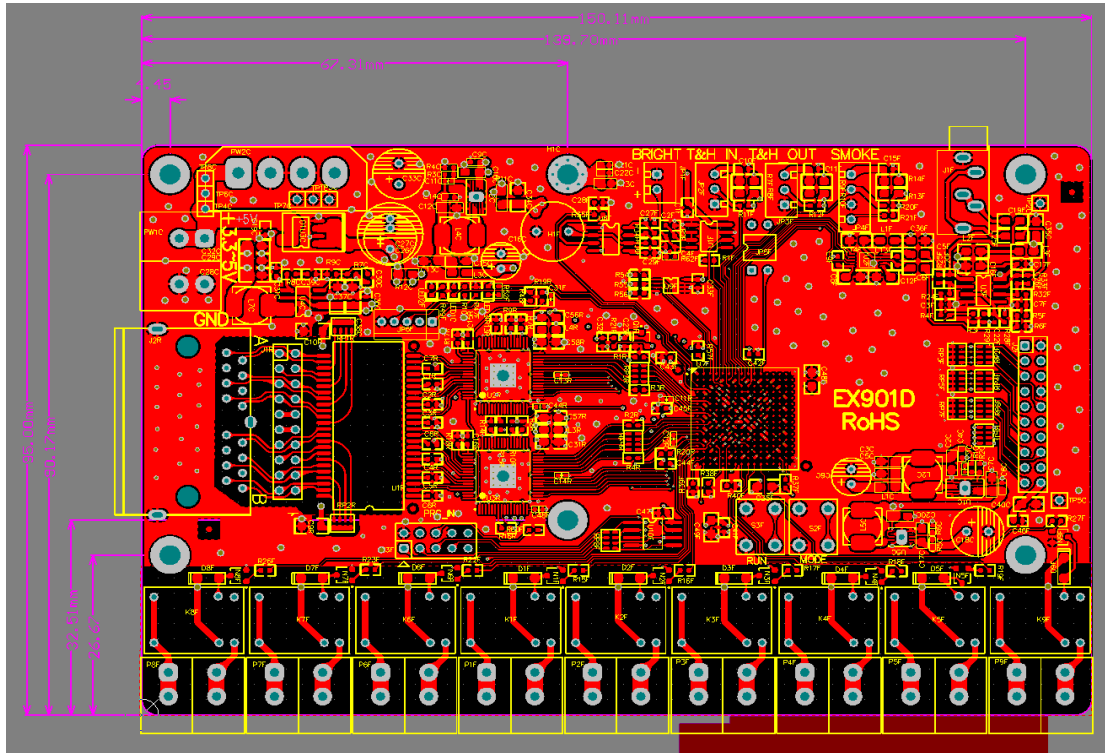
Input Audio data to Sending card 3.5mm audio jack; the audio data will be transmitted to function board by RJ45 cable, then separate the Audio data and output from 3.5mm audio jack in Function board

## 6) Ex902 Cascade

When you use several sending cards cascaded for one screen, you also need to connect the function boards in cascade if you are using function board. For example, if you use two sending cards in cascade, the two function boards need to be cascade too, as following



#### 4. Installation hole position and dimension



## 5. Specifications

Rated Voltage (V)	5	Maximum value	5.5	Minimum value	4.5
Rated Current (A)	0.40	Maximum value	0.45	Minimum value	0.35
Rated power consumption (W)	2.0	Maximum value	2.5	Minimum value	1.6
Environment Temperature (°C)	-20°C ~ 70°C				
Environment Humidity	0% ~ 95%				

(%)	
-----	--



You can Get the [Linsn EX902 multifunction card](#) here