

# Linsn RV901T Receiving Card

2016 Dec

## 1. Function



- 1) Single card can output 16 groups R'GBR' data;
- 2) Single card can output 20 groups RGB data;
- 3) Single card can output 31 groups serial data;
- 4) Single card maximum supports 1024X256 pixels (Please note that there are recommendation values for different design of led screen );
- 5) Support pixel-by-pixel brightness calibration; single-card color space conversion;
- 6) Support network cable BER test;

- 7) High refresh rate and high grey level with most of the driver ICs;
- 8) In line with EU standards RoHS;

## 2. RV901T PINOUT

### 1) Normal mode (default mode)

Support full-color screen, virtual full-color screen and double-color screen, each 50-pin interface has 8 groups of full-color / virtual screen data or 16 groups of two-color screen data.

In normal mode, 50pin is defined as follow.

RGBR'				Double color			
GND	1	2	VCC	GND	1	2	VCC
GND	3	4	VCC	GND	3	4	VCC
GND	5	6	SR	GND	5	6	SR
R8'	7	8	U8	G16	7	8	R16
G8	9	10	R8	G15	9	10	R15
R7'	11	12	U7	G14	11	12	R14
G7	13	14	R7	G13	13	14	R13

R6'	15	16	U6		G12	15	16	R12
G6	17	18	R6		G11	17	18	R11
R5'	19	20	U5		G10	19	20	R10
G5	21	22	R5		G9	21	22	R9
R4'	23	24	U4		G8	23	24	R8
G4	25	26	R4		G7	25	26	R7
R3'	27	28	U3		G6	27	28	R6
G3	29	30	R3		G5	29	30	R5
R2'	31	32	U2		G4	31	32	R4
G2	33	34	R2		G3	33	34	R3
R1'	35	36	U1		G2	35	36	R2
G1	37	38	R1		G1	37	38	R1
D	39	40	C		D	39	40	C
B	41	42	A		B	41	42	A
LAT	43	44	CLK		LAT	43	44	CLK
OE	45	46	GND		OE	45	46	GND
VCC	47	48	GND		VCC	47	48	GND
VCC	49	50	GND		VCC	49	50	GND

## 2) 20 groups parallel data mode

Only for full-color screen

In this mode, 50pin is defined as follow.

GND	1	2	VCC
GND	3	4	VCC
GND	5	6	SR
NC	7	8	NC
U10	9	10	G10
R10	11	12	U9
G9	13	14	R9
U8	15	16	G8
R8	17	18	U7
G7	19	20	R7
U6	21	22	G6
R6	23	24	U5
G5	25	26	R5
U4	27	28	G4
R4	29	30	U3

G3	31	32	R3
U2	33	34	G2
R2	35	36	U1
G1	37	38	R1
D	39	40	C
B	41	42	A
LAT	43	44	CLK
OE	45	46	GND
VCC	47	48	GND
VCC	49	50	GND

1)

**Model table**

RV901T and RV921T are in stock. RV911T and RV931T need make to order.

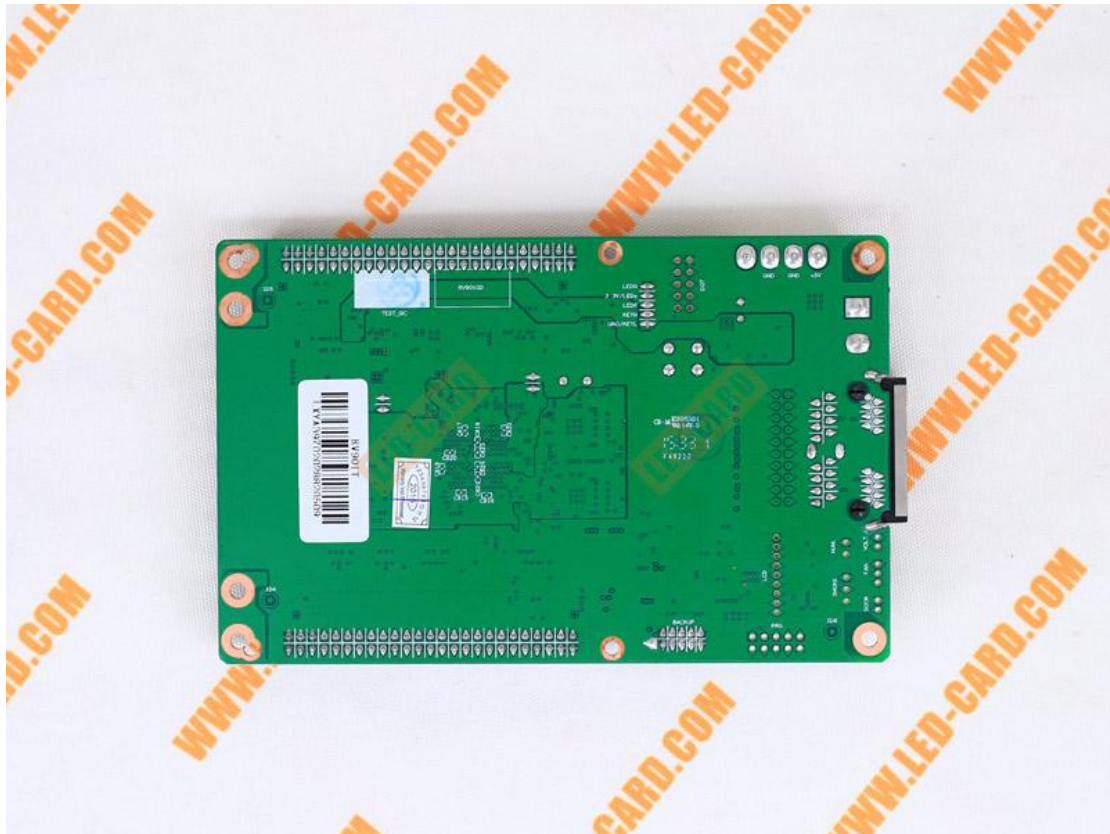
Model	RJ45 Direction	output interface type
RV901T	90 Degree	interface in front side
RV911T	180 Degree	interface in front side
RV921T	90 Degree	interface at the back side
RV931T	180 Degree	interface at the back side

2)

### Working conditions

Rated voltage (V)	5	maximum value	5.5	Minimum value	4.5
Rated current (A)	0.80	maximum value	0.87	Minimum value	0.73
Rated power consumption (W)	4.0	maximum value	4.8	Minimum value	3.3
Working temperature (°C)	-20°C ~ 70°C				
Working humidity (%)	0% ~ 95%				





You can Get the [Linsn RV901T Receiver Card](#) here