

# Linsn RV908M32 Receiver Card

2016 Dec

## 1. Function



- 1) 12 hub75 interface on board(supports 32 scan mode), no extra hub card needed;
- 2) Supports 12-bit HDMI colors input (required the 9th generation sending card);
- 3) Using 18-bit signal processor, maximum support 18-bit (260,000) gray (each of red, green and blue);
- 4) Single card maximum support  $1024 \times 768$  pixels;
- 5) Single card can output 24 groups RGB data;
- 6) Supports 138 decode, 595 serial decode and so on.

- 7) Supports pixel-by-pixel brightness and color calibration;  
single-card color space conversion;
- 8) High refresh rate and high grey level with most of the driver ICs;
- 9) Supports general driver ICs and most of the PWM driver ICs
- 10) Support hot backup with dual receiver cards for demanding performances screen;
- 11) Support network cable BER test;
- 12) In line with RoHS standards;
- 13) In line with EU standards CE-EMC class B;

Compare with RV908T/RV908H, RV908M is with E signal which can supports up to 32 scan mode; one more set network port can be added which can realize two sets network cable and network port hot backup function. The model in stock is with 2 network ports, and you need to make order if you need 4 ports.

## 1) **RV908M PINOUT**

The receiving card has 2 operating modes, only supporting Full-color and two-color screen. Normal mode has 8 available interfaces; 12-group-data-mode has 12 available interfaces.

Each interface output data is as following:

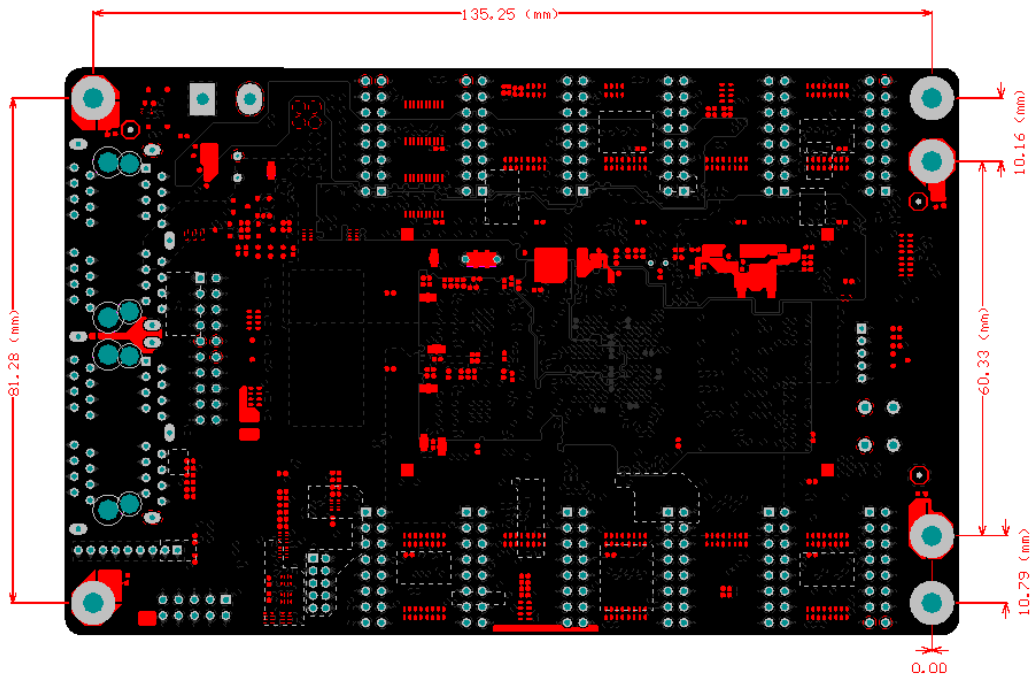
R1	1	2	G1
U1	3	4	GND
R2	5	6	G2
U2	7	8	GND
A	9	10	B
C	11	12	D
CLK	13	14	LAT
OE	15	16	GND

### 3. Model table

RV908H is in stock. RV918H need make to order.

Model	RJ45 Direction	output interface type
RV908H	90 Degree	interface in front side
RV918H	180 Degree	interface in front side

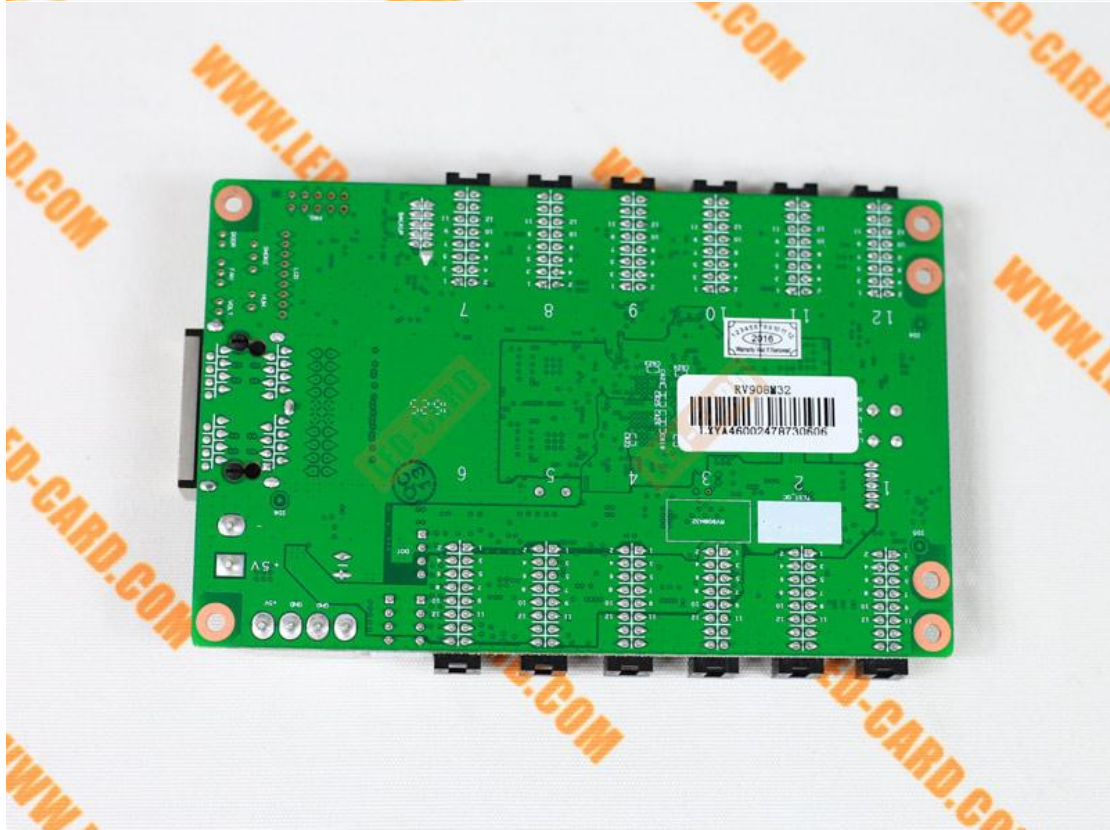
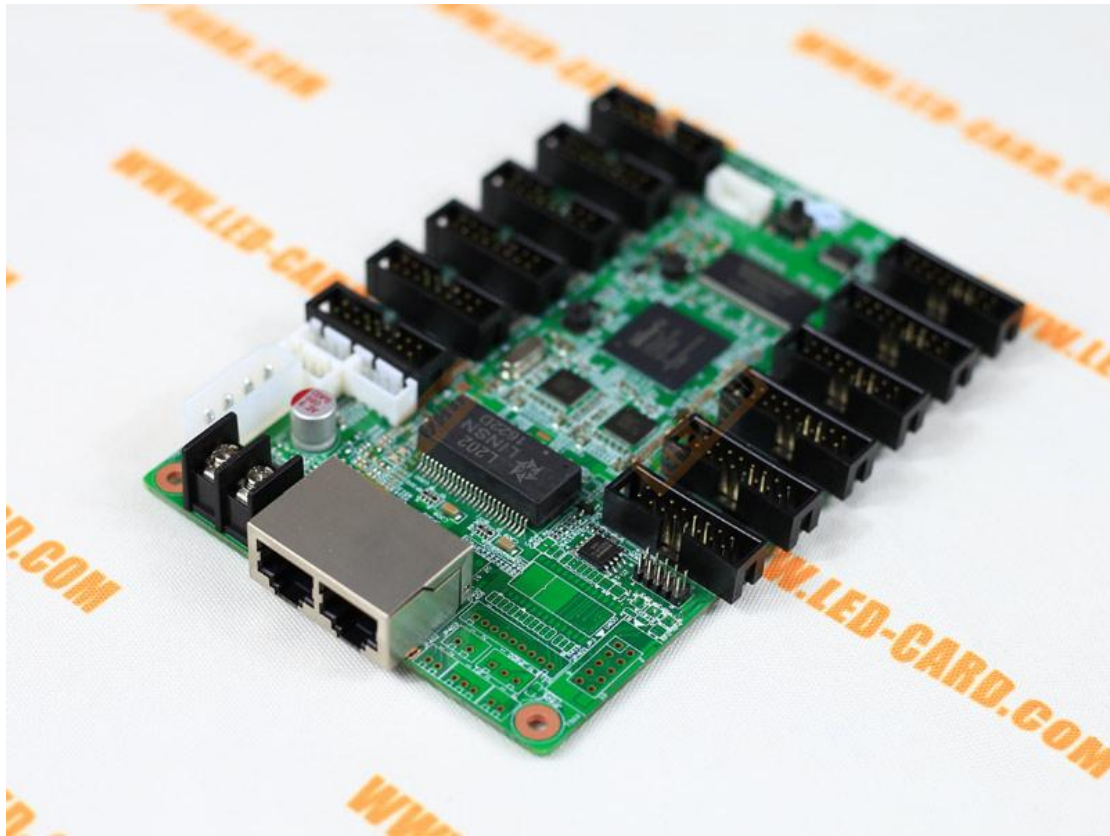
### 4. Dimension and position of the installation holes



## 5. Working conditions

Rated voltage (V)	5	maximum value	5.5	Minimum value	4.5
Rated current (A)	0.80	maximum value	0.87	Minimum value	0.73
Rated power consumption (W)	4.0	maximum value	4.8	Minimum value	3.3
Working temperature (°C)	-20°C ~ 70°C				
Working humidity (%)	0% ~ 95%				





You can Get the [Linsn RV908M32 Receiver Card](#) here