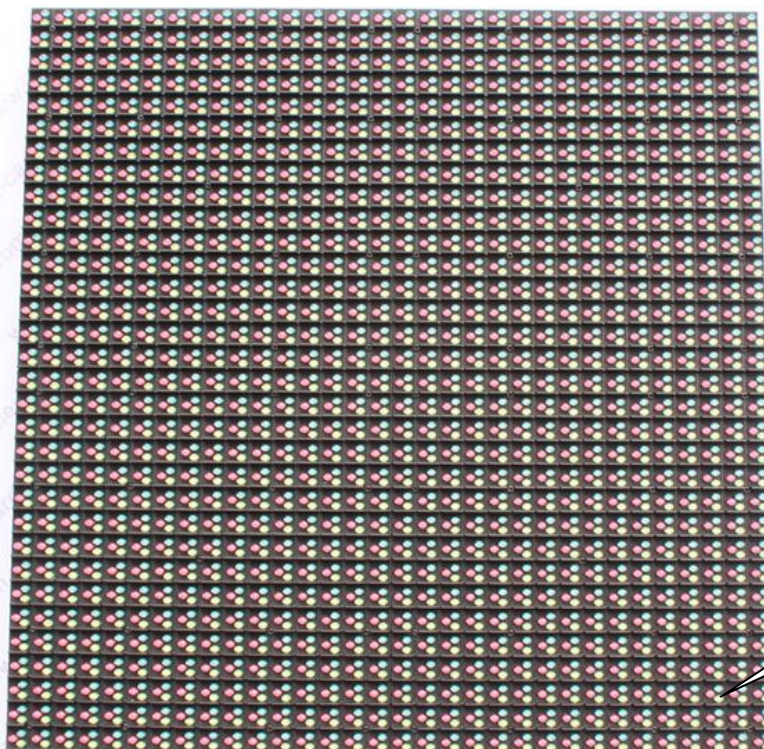


P10 outdoor LED display Technical Specification:

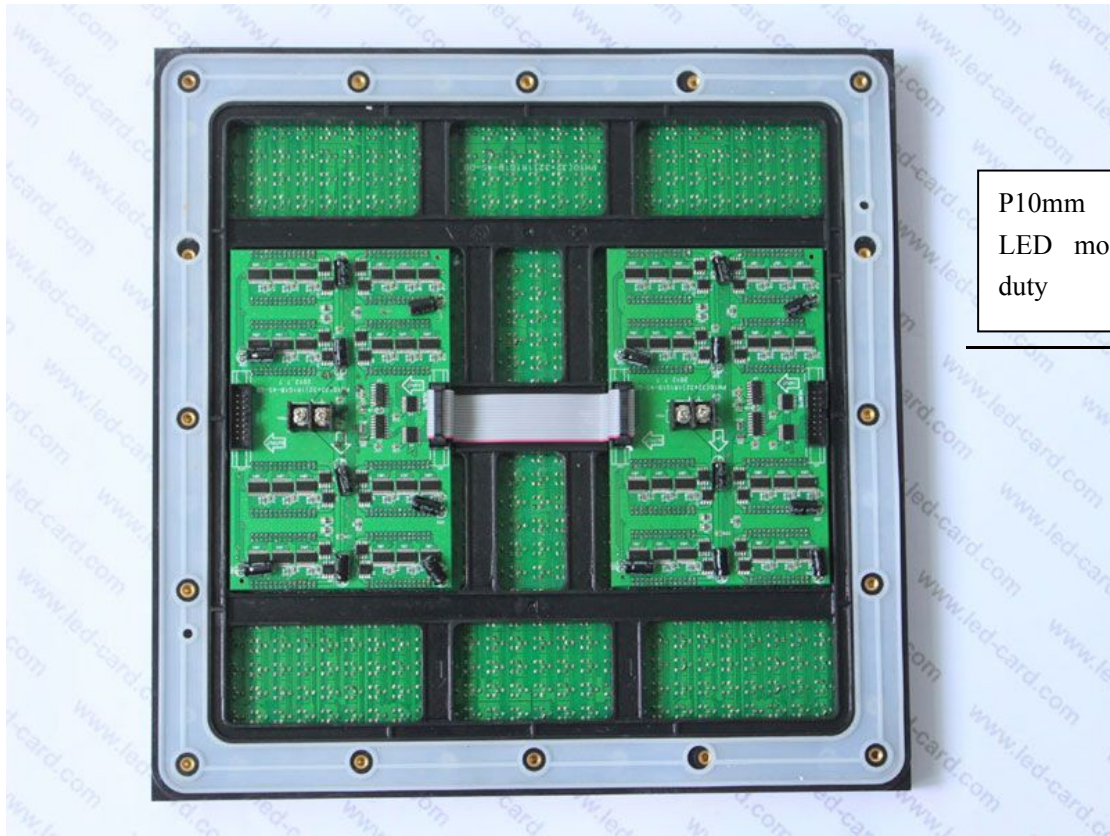
Product model number	P10 Outdoor DIP 320*320
1.Pixel	
LED type	DIP346
Pixel configuration	1R, 1G, 1B
Wave length (nm)	R: 622.5-625, G: 522.5-525, B: 465-467.5
Pixel Pitch (mm)	10
2.Module	
Module size (mm)	320(L) * 320(H) * 35(D)
Module resolution (pixels)	32(L) * 32(H)
3.Cabinet	
Module quantity in a cabinet	3(L) * 3(H)
Cabinet size (mm)	960(L) * 960(H) * 175(D)
Cabinet resolution (pixels)	60(L)* 60(H)
Cabinet material	Steel
Weight (kg/cabinet)	≈55
4.Packaging	
Packing Way	Two cabinets packed into one
Packing box material	Wooden case
Packing box size (mm)	1060 * 1260 * 480
5.Electricity parameter	
Density(real) (pixels/m ²)	10000
Density(virtual)(pixels/m ²)	-----
White balance brightness(cd/m ²)	≥8000
Color temperature(K)	5000—9300
Brightness adjusted	100 grades by software, or by Auto-optic induced.
Viewing angle	Horizontal 110°; Vertical 50°
Best viewing distance(m)	10~200
Communication distance (m)	Internet Wire: 100, Multimode Fiber Cable: 500
Driving mode	Constant current, 1/4 duty
Gray grades	16384 levels for each color
Display color	4,398,046,511,104
Refresh frequency (Hz)	≥2400
Frame frequency (Hz)	≥60
Picture display method	Dot to dot display synchronized with CRT

Signal interface	DVI
Input signal	Video: PAL/NTSC optioned. VGA, S-video, DVD,TV
Display format	800 * 600, 1024 * 768, 1280 * 1024
Software	Support windows series system
Protection grade	IP65(front); IP54(rear)
Working temperature(°C)	-20~+60
Humidity(RH)	10%~90%
Stored temperature (°C)	-30~+70
Screen lifetime(hours)	≥100,000
Out of controlled pixels	≤1/10,000 (Out of controlled pixels means the pixels of which the brightness and the wave length are both >10% depart to the normal one)
Whole display flatness	Less than 1mm Juncture
Maintenance way	Back-maintained, modules displaced
Switching power supply	110V/60HZ, 220V/50HZ (single phase)
Power consumption (w/m ²)	Max 900, Average: ≈300

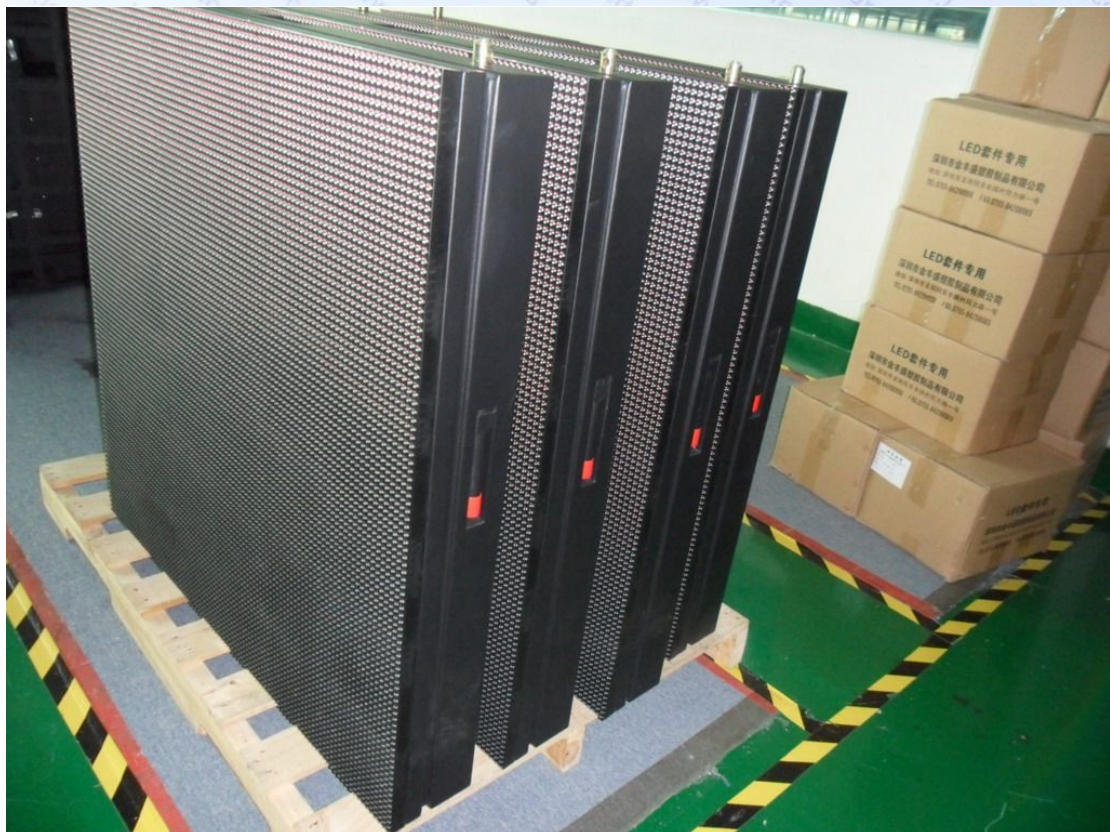
◆ Relevant pictures:

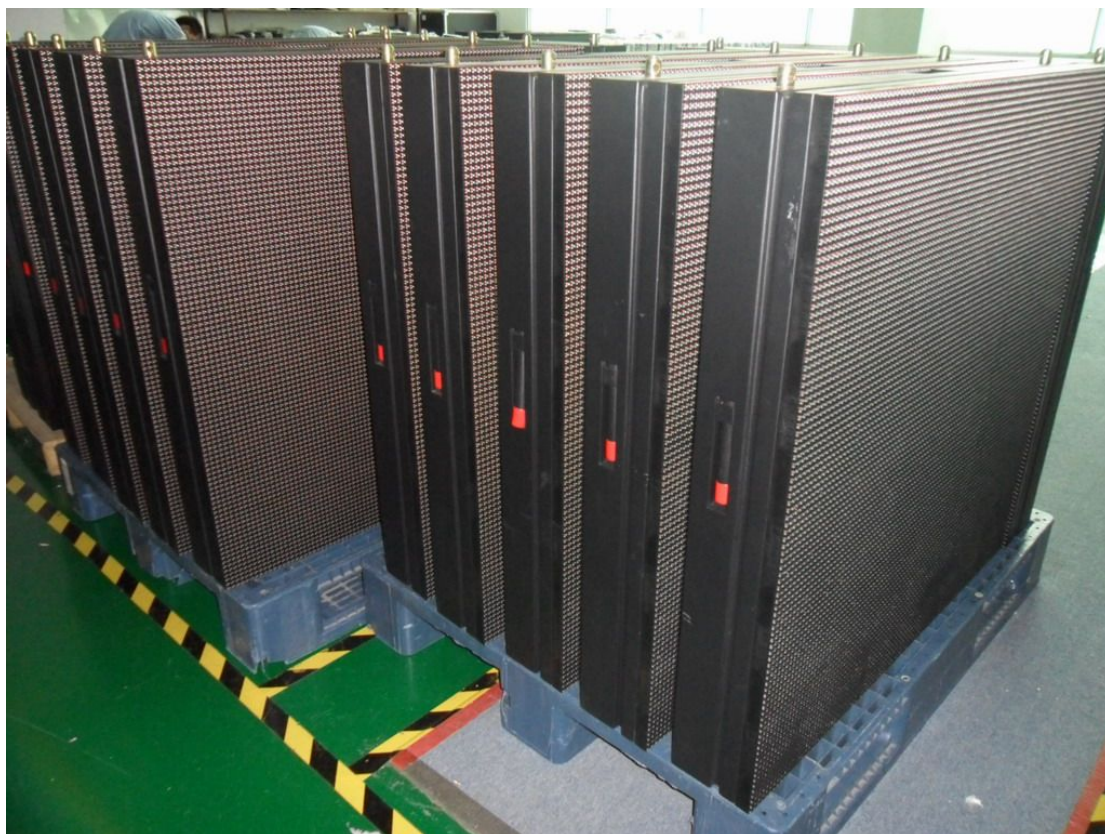


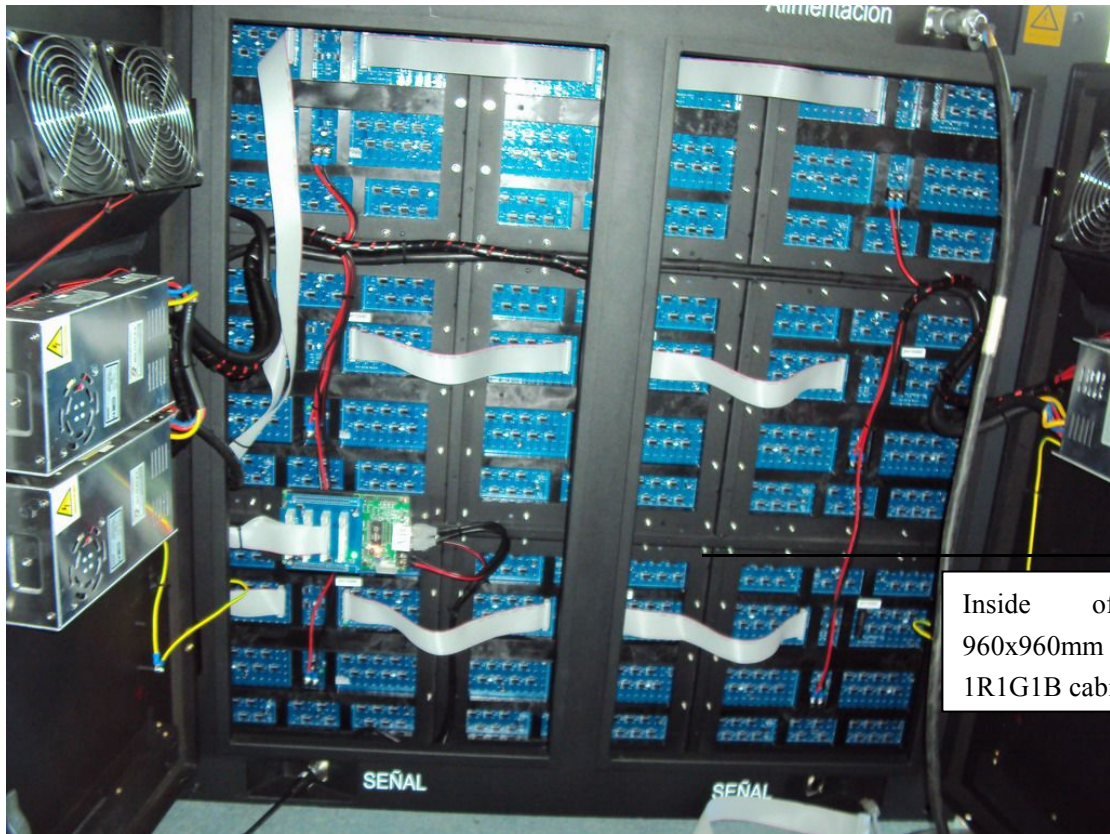
P10mm module,
1R1G1B, 20x20pixels,
320x320mm



P10mm 1R1G1B
LED module, 1/4
duty







Inside of the 960x960mm P10 1R1G1B cabinet



Back view of P16mm 1R1G1B outdoor LED screen



Case project of P16mm 1R1G1B LED screen, 147sqm



P16 1R1G1B outdoor LED screen project Guangzhou China, 80sqm



310sqm P10 1R1G1B outdoor LED screen in Xi'an China



Components and accessories packed in the wooden case



Wooden cases for packaging