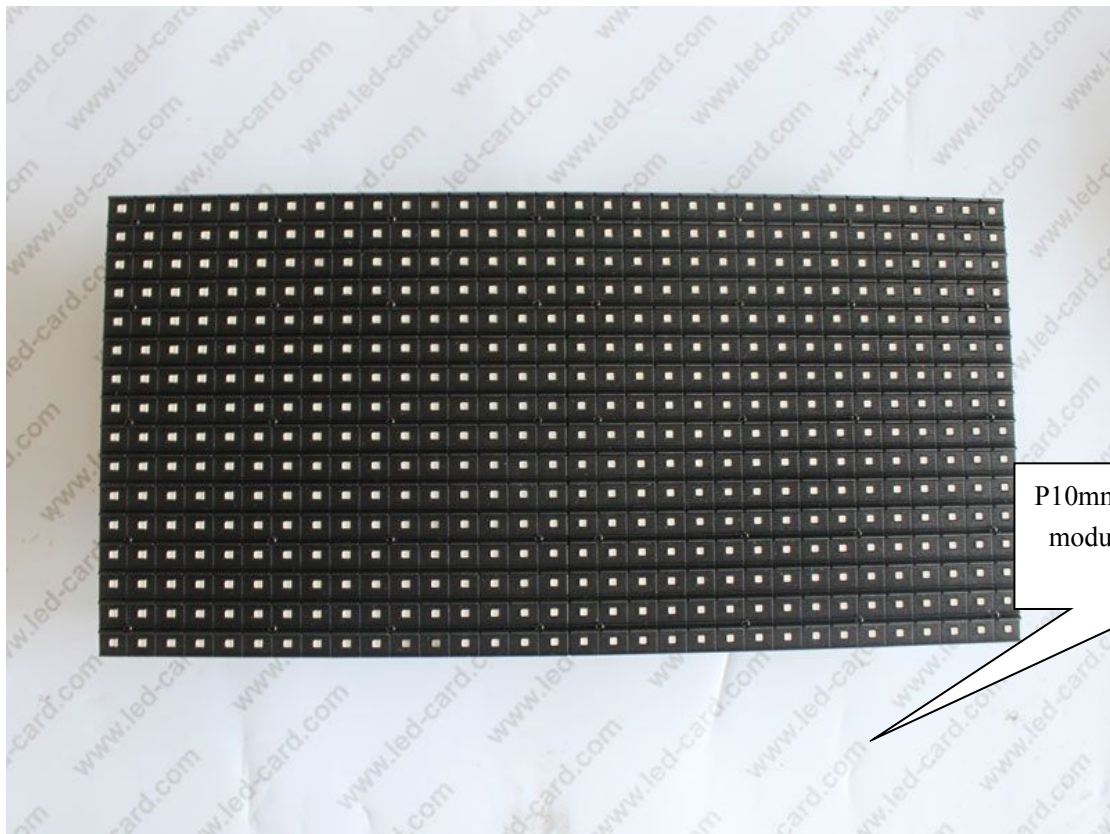


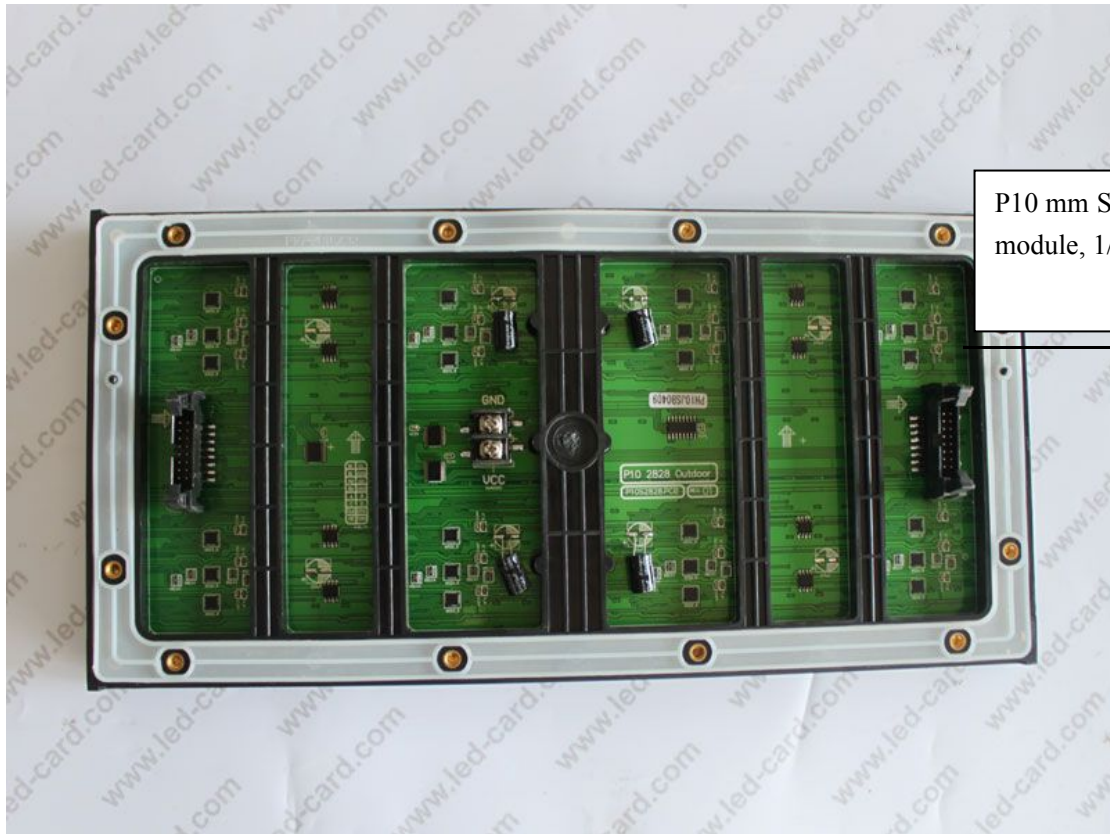
P10 outdoor SMD display Technical Specification:

Product model number	P10 Outdoor SMD 3535 320*160
1.Pixel	
LED type	DIP346
Pixel configuration	1R, 1G, 1B
Wave length (nm)	R: 622.5-625, G: 522.5-525, B: 465-467.5
Pixel Pitch (mm)	10
2.Module	
Module size (mm)	320(L) * 160(H) * 18(D)
Module resolution (pixels)	32(L) * 16(H)
3.Cabinet	
Module quantity in a cabinet	3(L) * 6(H)
Cabinet size (mm)	960(L) * 960(H) * 160(D)
Cabinet resolution (pixels)	96(L) * 96(H)
Cabinet material	Steel
Weight (kg/cabinet)	≈48
4.Packaging	
Packing Way	Two cabinets packed into one
Packing box material	Wooden case
Packing box size (mm)	1060 * 1260 * 480
5.Electricity parameter	
Density(real) (pixels/m ²)	10000
Density(virtual)(pixels/m ²)	-----
White balance brightness(cd/m ²)	≥7000
Color temperature(K)	5000—9300
Brightness adjusted	100 grades by software, or by Auto-optic induced.
Viewing angle	140°
Best viewing distance(m)	8~200
Communication distance (m)	Internet Wire : 100, Multimode Fiber Cable : 500
Driving mode	Constant current, 1/4 duty
Gray grades	16384 levels for each color
Display color	4,398,046,511,104
Refresh frequency (Hz)	≥2400
Frame frequency (Hz)	≥60
Picture display method	Dot to dot display synchronized with CRT

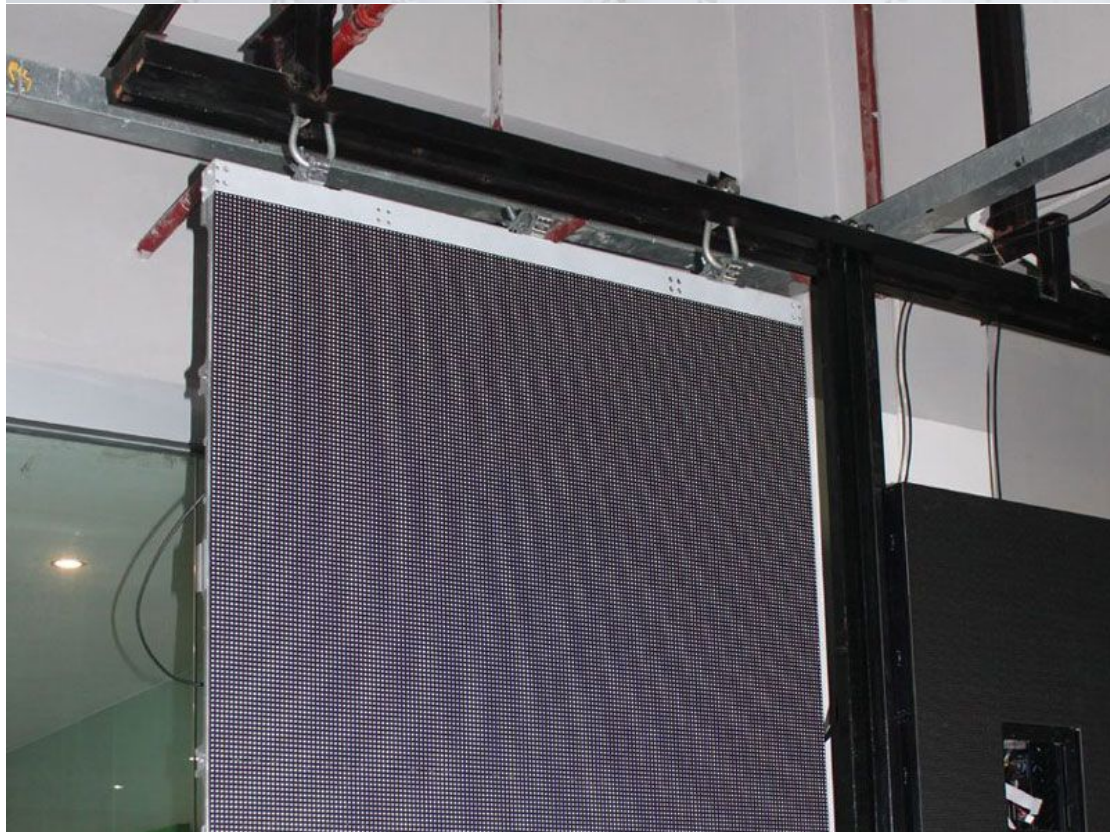
Signal interface	DVI
Input signal	Video: PAL/NTSC optioned. VGA, S-video, DVD,TV
Display format	800 * 600, 1024 * 768, 1280 * 1024
Software	Support windows series system
Protection grade	IP65(front); IP54(rear)
Working temperature(°C)	-20~+60
Humidity(RH)	10%~90%

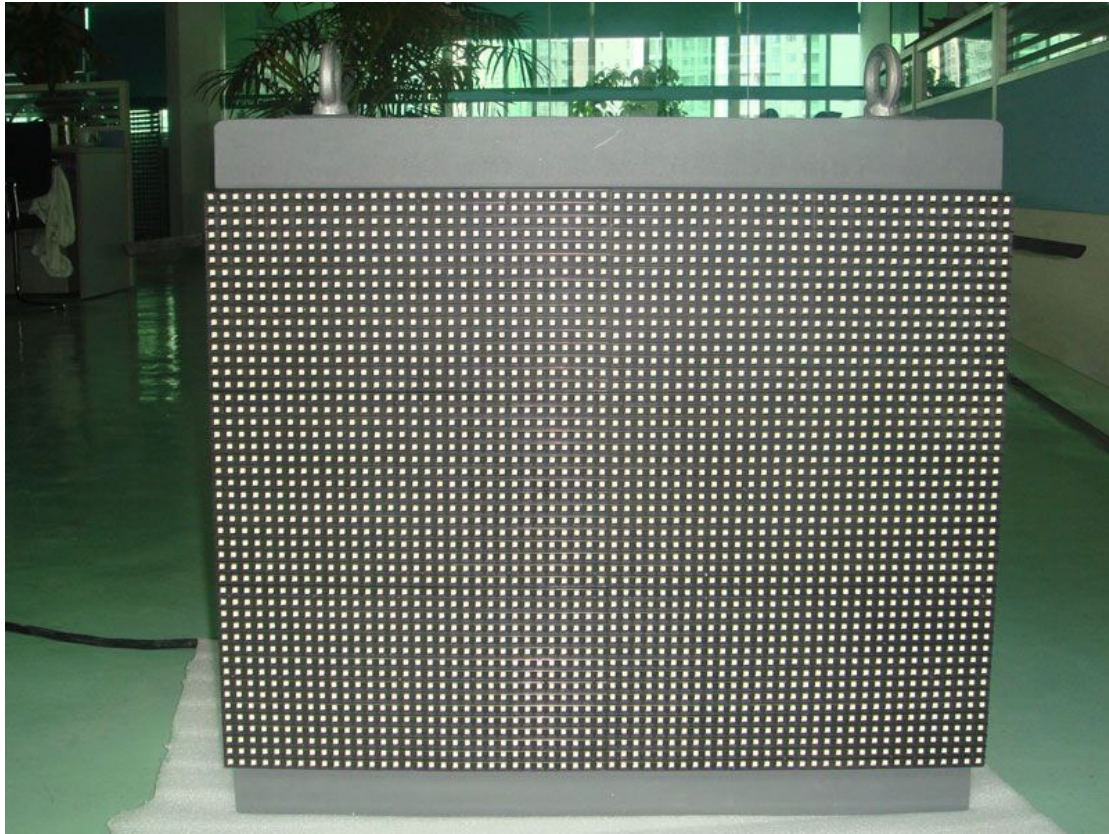
◆ Relevant pictures:

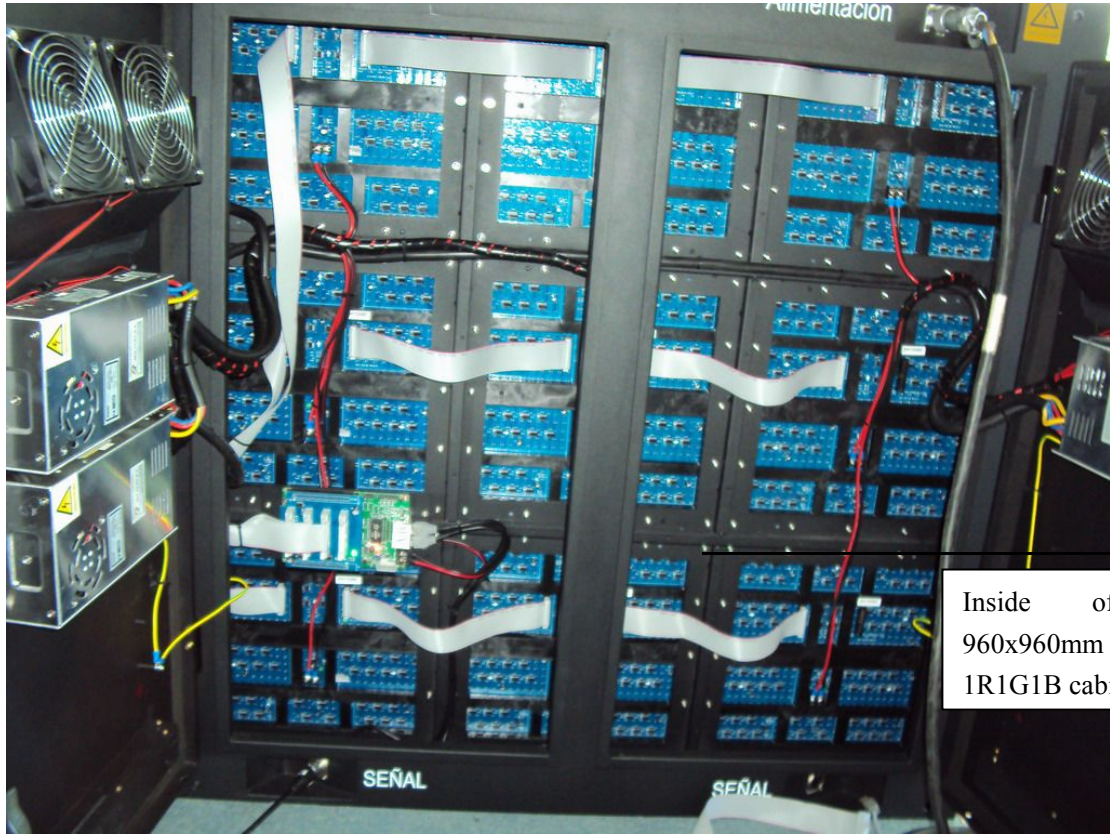




P10 mm SMD LED module, 1/4 duty







Inside of the 960x960mm P10 1R1G1B cabinet



Back view of P16mm 1R1G1B outdoor LED screen



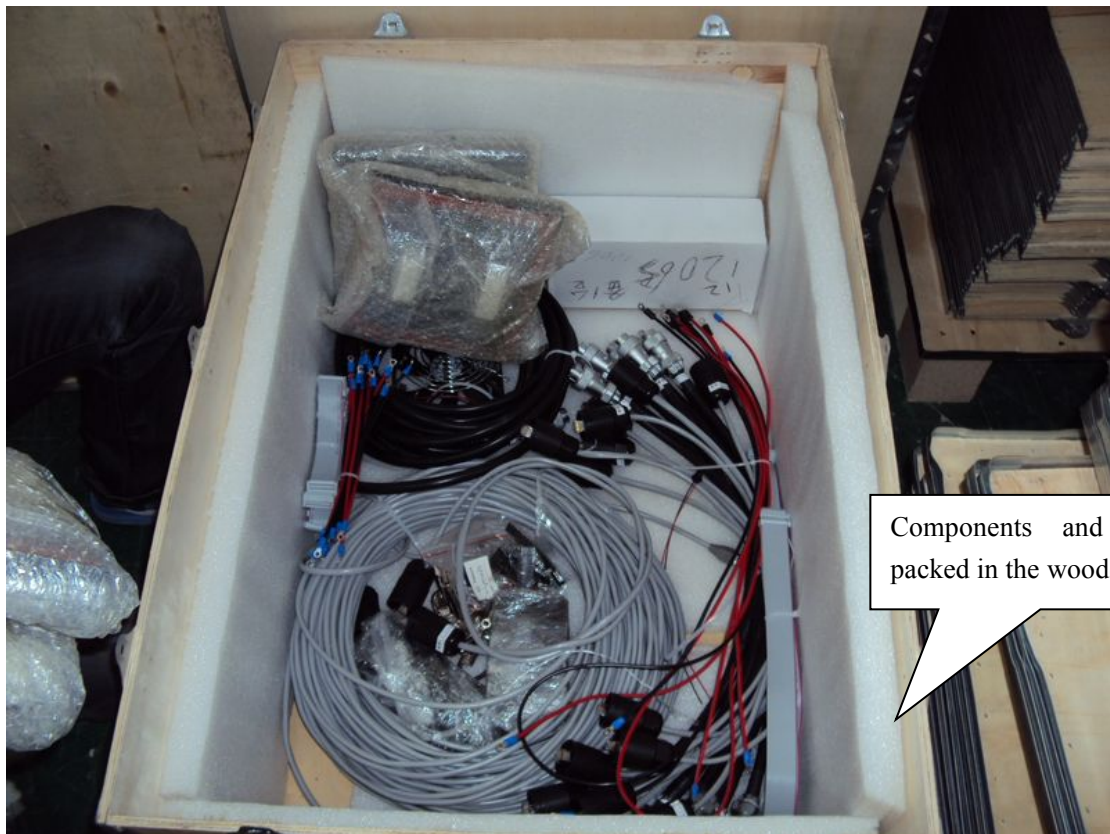
Case project of P16mm 1R1G1B LED screen, 147sqm



P16 1R1G1B outdoor LED screen project Guangzhou China, 80sqm



310sqm P10 1R1G1B outdoor LED screen in Xi'an China



Components and accessories packed in the wooden case



Wooden cases for packaging